

Gelcopper Single Rolls • Gelcopper Linesets • TwinGel
FullMetalGel • Gelpatch • Gelcover



TRY IT, LOVE IT
MADE IN USA

Call Us Today: 803.909.8100

Online: www.pdmus.com • Email: info@pdmus.com



GELCOPPER PRODUCTS

PDM US - "First In Pipes"

PDM US, counts on over 40 years experience in Europe in copper tubes manufacturing. In April 2013, we decided to relocate our World Headquarters and main production plant in Rock Hill, South Carolina, USA. Since then, we pride ourselves on innovating, manufacturing and delivering the best preinsulated copper pipes in the US industry.

Why Choose Us?



INNOVATIVE THINKING

Our solutions continuously improve the HVAC piping industries with simple, durable and cost effective solutions. Our R&D keeps brain storming, testing and creating new products making sure we always keep leading and NEVER FOLLOW.



SERVICE

We pride ourselves on our service by keeping our customers the number one priority. Choosing PDM US means also creating a delightful supplier-customer experience.



QUALITY

Our proprietary product is crafted to perfection, it is 25/50 tested multiple times and ASTM B280 certified. It's proven itself to work, to last and to satisfy your needs. Contact us and we'll show you how it's done.



AVAILABILITY

Our plant is always in production - 24hrs a day, 7 days a week, 365 days a year. We never stop, constantly timing in advance the right production cycles, making sure to always have enough products to quickly and efficiently fulfill your orders.

GELCOPPER US: TRY IT, LOVE IT



PDM US:

The 10 Competitive Advantages

1. DURABILITY. Our polyethylene internal foam and protective outer jacket make our solution extremely tough and very difficult to tear or break apart. Our insulation is the most resistant and long lasting in the market. Other competitors' insulation breaks by simply tearing it by hands or falls apart over time.

2. 100% MADE IN USA. Most of the products from our competitors are made in Asia or Europe. Ours instead, In compliancy with the Buy American Act, are 100% made in the USA using exclusively American ingredients and therefore guaranteeing a high quality product, consistent availability and efficient logistic. We strongly support the buy American act.

3. ASTM-B280 / 700 PSI R410A COPPER. We only use high quality ASTM-B280 / 700 PSI R410A copper exclusively from top US mills.

4. UNIQUE INSULATING PROCESS. Several competitors of ours simply insert the copper tube into the insulation leaving a wide gap that could lead to condensation. Our pre-insulation process instead is performed by MACHINERY driven technology where the polyethylene foam is built on the copper tube and then coated by an additional protective outer jacket. This process ensures the insulation to be extremely tight around the copper tube preventing any risk of condensation.

5. SUPERLATIVE R-VALUES: our insulation has higher R-values when compared to similar thickness of traditional black rubber or to the ones of most of OUR competitors.

6. UL 25/50 PLENUM RATED. Our products are positively tested against fire and smoke by Underwriter Laboratories. They are all Plenum Rated.

7. UV RESISTANT. Our solutions are all UV resistant. They have been installed in the outdoor for many years and in many different places worldwide without raising any issue whatsoever. Black rubber breaks and falls apart overtime.

8. FOOT MARKING. The last phase of our insulating process ends by foot marking each of our rolls so contractors can count where to exactly charge the line and perform a professional installation. Traditional black rubber is not.

9. PAINTABLE. The standard color of our product is a beautiful shiny white but eventually it can be painted to match the surrounding.

10. LEADERSHIP OF PDM US. We are the true innovators of copper pipes insulation in the United States. We continuously evolve and set the trend for quality in our industry. We lead this market by improving our current products and constantly launching new solutions. Today we are one of the fastest growing companies in the HVAC industry and in the United States economy.



GELCOPPER™ PREINSULATED COPPER ROLL

GELCOPPER™ PREINSULATED COPPER ROLL

TRY IT, LOVE IT.

APPLICATIONS

It perfectly fits every air conditioning, such as ductless mini-splits, VRF, heat pumps and centralized air ducted units.

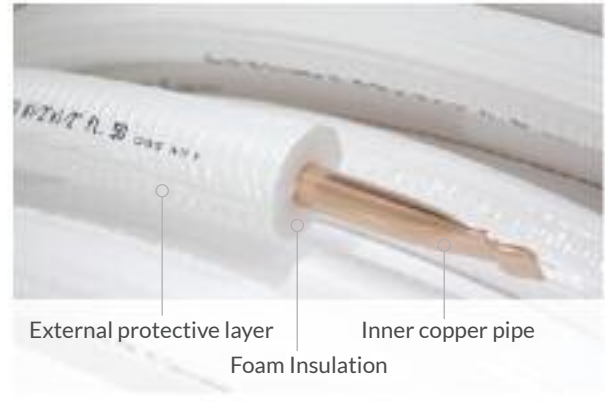
TECHNICAL SPECS

INSULATION

- Polyethylene closed cell foam:** assures thermal insulation from surroundings. ASTM C 1427-07 compliant Type I (tubular) Grade I (insulation material for use on typical commercial system non-crosslinked).
- Low-density polyethylene foam:** closed cells foam, CFC and HCFC gas free
- Water vapor permeability:** ASTM E96-00 compliant
- Working temperature:** ASTM C 1427-07 compliant
- Wall thickness:** 1/2" and 3/4"
- Surface burning characteristics:** UL 94, top rated – UL 723, ASTM E84 (25/50) compliant, flame and Spread Index less than 25 and Smoke Development Index less than 50 as tested according to UL 723.
- R-Value:** between 6.0 and 4.0 (depending on pipe diameter)

COPPER

- Pipes:** Manufactured according to ASTM B280
- Copper:** No. C122200 DHP (phosphorous deoxidized, high residual phosphorous), 99.90%.



SPECIAL FEATURES

- Outer Jacket:** additional white polyethylene jacket cover protects foam insulation from tearing during installation process.
 - Marking:** insulation incrementally marked by every foot to ensure accurate initial unit charge.
 - R410a approved:** Gelcopper can be used in applications where high-pressure gases are used as refrigeration source.
 - UV resistant:** Gelcopper is UV resistant.
 - Paintable:** the insulation can be painted to match the surroundings.
- PDM US recommends product installation under plastic duct to protect it from severe weather conditions, accidental damages or theft.

PRODUCT TABLE

PDM US PART NUMBER	ROLL SIZE	INSULATION	ROLLS (per pallet)	LENGTH (of rolls)
F100.GUS145012	1/4	1/2	26	50 FT
F100.GUS385012	3/8	1/2	22	50 FT
F100.GUS125012	1/2	1/2	20	50 FT
F100.GUS585012	5/8	1/2	14	50 FT
F100.GUS345012	3/4	1/2	14	50 FT
F100.GUS785012	7/8	1/2	14	50 FT
F100.GUS1416412	1/4	1/2	10	164 FT
F100.GUS3816412	3/8	1/2	8	164 FT
F100.GUS1216412	1/2	1/2	8	164 FT
F100.GUS5816412	5/8	1/2	6	164 FT
F100.GUS348212	3/4	1/2	10	82 FT
F100.GUS788212	7/8	1/2	10	82 FT
F100.GUS145034	1/4	3/4	14	50 FT
F100.GUS385034	3/8	3/4	14	50 FT
F100.GUS125034	1/2	3/4	12	50 FT
F100.GUS585034	5/8	3/4	12	50 FT
F100.GUS345034	3/4	3/4	10	50 FT
F100.GUS785034	7/8	3/4	10	50 FT



100% MADE IN THE USA

GELCOPPER LINE SETS™



100% MADE IN THE USA

GELCOPPER LINE SETS™

TRY IT, LOVE IT.

APPLICATIONS

It provides the perfect size combination for both suction and liquid lines to fit every air conditioning, such as ductless mini-splits, VRF, heat pumps and centralized air ducted units.

TECHNICAL SPECS

INSULATION

Polyethylene closed cell foam: assures thermal insulation from surroundings.

ASTM C 1427-07 compliant

Type I (tubular)

Grade I (insulation material for use on typical commercial system non-crosslinked).

Low-density polyethylene foam: closed cells foam, CFC and HCFC gas free

Water vapor permeability: ASTM E96-00 compliant

Working temperature: ASTM C 1427-07 compliant

Wall thickness: 1/2" and 3/4"

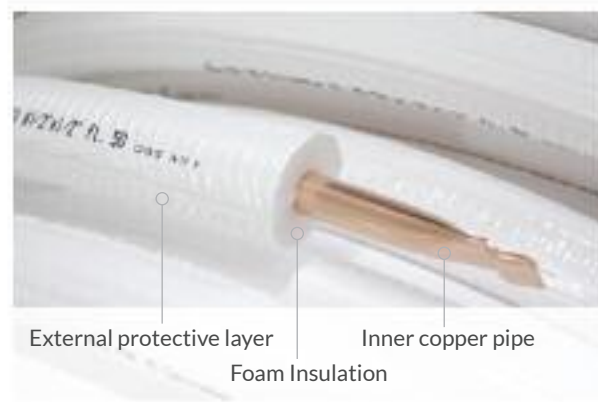
Surface burning characteristics: UL 94, top rated – UL 723, ASTM E84 (25/50) compliant, flame and Spread Index less than 25 and Smoke Development Index less than 50 as tested according to UL 723.

R-Value: between 6.0 and 4.0 (depending on pipe diameter)

COPPER

Pipes: Manufactured according to ASTM B280

Copper: No. C122200 DHP (phosphorous deoxidized, high residual phosphorous), 99.90%.



SPECIAL FEATURES

Outer Jacket: additional white polyethylene jacket cover protects foam insulation from tearing during installation process.

Marking: insulation incrementally marked by every foot to ensure accurate initial unit charge.

R410a approved: Gelcopper can be used in applications where high-pressure gases are used as refrigeration source.

UV resistant: Gelcopper is UV resistant.

Paintable: the insulation can be painted to match the surroundings.

PDM US recommends product installation under plastic duct to protect it from severe weather conditions, accidental damages or theft.

PRODUCT TABLE

PDM US PART NUMBER (both lines insulated)	LL	SL	INSULATION	LINE SETS (per pallet)	LENGTH (of rolls)
F100.LSIN143812050	1/4	3/8	1/2	12	50 FT
F100.LSIN141212050	1/4	1/2	1/2	12	50 FT
F100.LSIN145812050	1/4	5/8	1/2	8	50 FT
F100.LSIN381212050	3/8	1/2	1/2	12	50 FT
F100.LSIN385812050	3/8	5/8	1/2	8	50 FT
F100.LSIN383412050	3/8	3/4	1/2	8	50 FT
F100.LSIN387812050	3/8	7/8	1/2	6	50 FT

PDM US PART NUMBER (only SL insulated)	LL	SL	INSULATION	LINE SETS (per pallet)	LENGTH (of rolls)
F100.LS385812050	3/8	5/8	1/2	10	50 FT
F100.LS383412050	3/8	3/4	1/2	10	50 FT
F100.LS387812050	3/8	7/8	1/2	8	50 FT



100% MADE IN THE USA



100% MADE IN THE USA

TwinGel PREINSULATED COPPER LINE SETS

TwinGel PREINSULATED COPPER LINE SETS

TRY IT, LOVE IT.

APPLICATIONS

Lines are machinery attached one to the other for faster and easier install. It provides the perfect size combination for both suction and liquid lines to fit every air conditioning, such as ductless mini-splits, VRF, heat pumps and centralized air ducted units.

TECHNICAL SPECS

INSULATION

Polyethylene closed cell foam: assures thermal insulation from surroundings.

ASTM C 1427-07 compliant

Type I (tubular)

Grade I (insulation material for use on typical commercial system non-crosslinked).

Low-density polyethylene foam: closed cells foam, CFC and HCFC gas free

Water vapor permeability: ASTM E96-00 compliant

Working temperature: ASTM C 1427-07 compliant

Wall thickness: 1/2" and 3/4"

Surface burning characteristics: UL 94, top rated – UL 723, ASTM E84 (25/50) compliant, flame and Spread Index less than 25 and Smoke Development Index less than 50 as tested according to UL 723.

R-Value: between 6.0 and 4.0 (depending on pipe diameter)

COPPER

Pipes: Manufactured according to ASTM B280

Copper: No. C122200 DHP (phosphorous deoxidized, high residual phosphorous), 99.90%.



Foam Insulation Inner copper pipe
Lines machined to each other External protective layer

SPECIAL FEATURES

Outer Jacket: additional white polyethylene jacket cover protects foam insulation from tearing during installation process.

Marking: insulation incrementally marked by every foot to ensure accurate initial unit charge.

R410a approved: TwinGel can be used in applications where high-pressure gases are used as refrigeration source.

UV resistant: TwinGel is UV resistant.

Paintable: the insulation can be painted to match the surroundings.

PDMus recommends product installation under plastic duct to protect it from severe weather conditions, accidental damages or theft.

PRODUCT TABLE

PDM US PART NUMBER (both lines insulated)	LL	SL	INSULATION	LINE SETS (per pallet)	LENGTH (of rolls)
TG.LSIN143812050	1/4	3/8	1/2	12	50 FT
TG.LSIN141212050	1/4	1/2	1/2	12	50 FT
TG.LSIN145812050	1/4	5/8	1/2	8	50 FT
TG.LSIN381212050	3/8	1/2	1/2	12	50 FT
TG.LSIN385812050	3/8	5/8	1/2	8	50 FT
TG.LSIN383412050	3/8	3/4	1/2	8	50 FT
TG.LSIN387812050	3/8	7/8	1/2	6	50 FT



100% MADE IN THE USA

FullMetalGel

PREINSULATED COPPER ROLL WITH ALUMINUM PROTECTIVE LAYER



100% MADE IN THE USA

FullMetalGel

PREINSULATED COPPER ROLL WITH ALUMINUM PROTECTIVE LAYER

TRY IT, LOVE IT.

APPLICATIONS

An aluminum layer placed on top of polyethylene insulation foam and protective skin makes product extremely durable and resistant also for underground and outdoor installation eliminating the need of plastic ducts. An additional polyethylene outer jacket prevents aluminum from getting damaged by interior walls. It perfectly fits every air conditioning application such as ductless mini-split, heat pump units.

TECHNICAL SPECS

INSULATION

Polyethylene closed cell foam: assures thermal insulation from surroundings.

ASTM C 1427-07 compliant

Type I (tubular)

Grade I (insulation material for use on typical commercial system non-crosslinked).

Low-density polyethylene foam: closed cells foam, CFC and HCFC gas free

Water vapor permeability: ASTM E96-00 compliant

Working temperature: ASTM C 1427-07 compliant

Wall thickness: 1/2" and 3/4"

Surface burning characteristics: UL 94, top rated – UL 723, ASTM E84 (25/50) compliant, flame and Spread Index less than 25 and Smoke Development Index less than 50 as tested according to UL 723.

R-Value: between 6.0 and 4.0 (depending on pipe diameter)

COPPER

Pipes: Manufactured according to ASTM B280

Copper: No. C122200 DHP (phosphorous deoxidized, high residual phosphorous), 99.90%.



Inner copper pipe
Foam Insulation
Aluminum protective layer
External protective layer

SPECIAL FEATURES

Aluminum protective layer: aluminum layer provides extremely high durability and protection

Exterior Jacket: additional polyethylene outer jacket protects aluminum from getting damaged

Foot Marking: insulation incrementally marked by every foot to ensure accurate initial unit charge.

R410a approved: Gelcopper can be used in applications where high-pressure gases are used as refrigeration source.

Paintable: the insulation can be painted to match the surroundings.

UV proof: FullMetalGel is UV proof!

PRODUCT TABLE

PDM US PART NUMBER	ROLL SIZE	INSULATION	ROLLS (per pallet)	LENGTH (of rolls)
FMG.GUS145012	1/4	1/2	26	50 FT
FMG.GUS385012	3/8	1/2	22	50 FT
FMG.GUS125012	1/2	1/2	20	50 FT
FMG.GUS585012	5/8	1/2	14	50 FT
FMG.GUS345012	3/4	1/2	14	50 FT
FMG.GUS785012	7/8	1/2	14	50 FT
FMG.GUS1416412	1/4	1/2	10	164 FT
FMG.GUS3816412	3/8	1/2	8	164 FT
FMG.GUS1216412	1/2	1/2	8	164 FT
FMG.GUS5816412	5/8	1/2	6	164 FT
FMG.GUS348212	3/4	1/2	10	82 FT
FMG.GUS788212	7/8	1/2	10	82 FT



100% MADE IN THE USA

GELPATCH™



100% MADE IN THE USA

GELPATCH™

TRY IT, LOVE IT.

APPLICATIONS

It perfectly completes any installation job where copper line sets are involved. Works for every air conditioning application such as ductless mini-split, heat pump unit and centralized air ducted unit. The polyethylene closed cell foam assures thermal insulation from surroundings.

TECHNICAL SPECS

Polyethylene closed cell foam: assures thermal insulation from surroundings.

ASTM C 1427-07 compliant

Type I (tubular)

Grade I (insulation material for use on typical commercial system non-crosslinked).

Low-density polyethylene foam: closed cells foam, CFC and HCFC gas free

Water vapor permeability: ASTM E96-00 compliant

Working temperature: ASTM C 1427-07 compliant

Wall thickness: 1/2" and 3/4"

Surface burning characteristics: UL 94, top rated – UL 723, ASTM E84 (25/50) compliant, flame and Spread Index less than 25 and Smoke Development Index less than 50 as tested according to UL 723.

R-Value: between 6.0 and 4.0 (depending on pipe diameter)



SPECIAL FEATURES

Outer Jacket: additional polyethylene jacket cover protects foam insulation from tearing during installation process.

R410a approved: GelPatch can be used in applications where high-pressure gases are used as a refrigeration source.

UV resistant: GelPatch is UV resistant.

Paintable: the insulation can be painted to match the surroundings.

PDM US recommends product installation under plastic duct to protect it from severe weather conditions, accidental damages or theft.

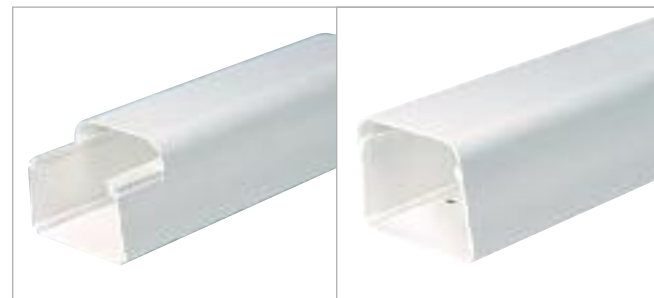
PRODUCT TABLE

PDM US PART NUMBER	ROLL SIZE	INSULATION	LENGTH (of rolls)	PIECES (per bag)	BAGS (per carton)
F100.GP140312	1/4	1/2	3 FT	10	16
F100.GP380312	3/8	1/2	3 FT	8	16
F100.GP120312	1/2	1/2	3 FT	7	16
F100.GP580312	5/8	1/2	3 FT	5	16
F100.GP340312	3/4	1/2	3 FT	4	16
F100.GP780312	7/8	1/2	3 FT	3	16
F100.GP140334	1/4	3/4	3 FT	6	16
F100.GP380334	3/8	3/4	3 FT	5	16
F100.GP120334	1/2	3/4	3 FT	4	16
F100.GP580334	5/8	3/4	3 FT	3	16
F100.GP340334	3/4	3/4	3 FT	3	16
F100.GP780334	7/8	3/4	3 FT	3	16



GELCOVER™ PLASTIC DUCT COVER

TRY IT, CLICK IT



CONNECT WITH JUST ONE CLICK!

SPECIAL FEATURES

- Screw-less Fittings:** Gelcover parts connect to each other with just a click.
- Weather/Vandalism/FIRE and Pets/Pests proof:** Gelcover protects pipes, line-sets and cables from severe weather conditions, vandalism, pets and pests
- UV resistant:** Gelcover Plastic Ducts and its accessories are all UV resistant.
- Paintable:** can be painted to match surroundings.

PDM US recommends product installation under GELCOVER plastic ducts to protect it from severe weather conditions, accidental damages or thefts.

APPLICATIONS

It perfectly covers every pipe, line-sets and wires for HVAC systems installations, providing great protection for outdoor and also indoor applications. All parts and accessories connect to each other with just a click: no screw required.

TECHNICAL SPECS

- Material:** Extruded Rigid PVC
- Density:** 0.036 lb / in3 ISO1183 tested
- Vicat Softening Point:** 174F ISO306 tested
- Hardness:** 81 Shores D ISO868 tested
- Elastic Modulus:** 3600 MPa ISO178 tested
- Yield Point:** 32 N/mm2 ISO527 tested
- Tensile Strength:** 33 N/mm2 ISO527 tested
- Deformation at Break:** 110% ISO527 tested
- Izod impact test:** 75 J/m ISO180 tested
- Inflammability:** Class V0 UL 94 tested



GelCover Duct

UV-Ray Stabilized, Fireproof, Paint Ready

Code	9804-001-08	9802-001-08	9803-001-08
Model	DUE70	DUE90	DUE125
Dimension (mm) AXB	70x55	90x65	125x75
Dimension (inch.)	2-3/4"x2-1/8"	3-1/2"x2-9/16"	4-15/16"x2-15/16"
Qty/ctn (pcs)	12	8	6



Adjustable Bend

Can be adjusted from 45° to 135°

Code	9804-117-08	9802-117-08
Model	ABE70	ABE90
Dimension (mm)	70x55	90x65
Dimension (inch.)	2-3/4"x2-1/8"	3-1/2"x2-9/16"
Qty/ctn (pcs)	6	6



External Elbow

To connect two ducts at right external angles.

Code	9804-113-08	9802-113-08	9803-113-08
Model	EBE70	EBE90	EBE125
Dimension (mm)	70x55	90x65	125x75
Dimension (inch.)	2-3/4"x2-1/8"	3-1/2"x2-9/16"	4-15/16"x2-15/16"
Qty/ctn (pcs)	10	10	10



Wall Bend

To cover wall holes and the end of the duct.

Code	9804-116-08	9802-116-08	9803-116-08
Model	WTE70	WTE90	WTE125
Dimension (mm)	70x55	90x65	125x75
Dimension (inch.)	2-3/4"x2-1/8"	3-1/2"x2-9/16"	4-15/16"x2-15/16"
Qty/ctn (pcs)	10	10	10



Upper Connector

Connects two ducts.

Code	9804-102-08	9802-102-08	9803-102-08
Model	CSE70	CSE90	CSE125
Dimension (mm)	70x55	90x65	125x75
Dimension (inch.)	2-3/4"x2-1/8"	3-1/2"x2-9/16"	4-15/16"x2-15/16"
Qty/ctn (pcs)	25	25	25



Tightening Clamp

Holds pipes/cables inside duct. Adjustable.

Code	9804-101-00	9802-101-00	9803-101-00
Model	PFBE70	PFBE90	PFBE125
Dimension (mm)	70x55	90x65	125x75
Dimension (inch.)	2-3/4"x2-1/8"	3-1/2"x2-9/16"	4-15/16"x2-15/16"
Qty/ctn (pcs)	25	25	25



End Cover

To finish the duct in the wall insertion.

Code	9804-114-08	9802-114-08	9803-114-08
Model	EDTE70	EDTE90	EDTE125
Dimension (mm)	70x55	90x65	125x75
Dimension (inch.)	2-3/4"x2-1/8"	3-1/2"x2-9/16"	4-15/16"x2-15/16"
Qty/ctn (pcs)	10	10	10



Joint Reduction

To connect two ducts of different sizes.

Code	9804-201-08	9803-201-08
Model	OTP70	OTP125
Dimension (mm)	90x70	125x90
Dimension (inch.)	3-1/2"x2-3/4"	4-15/16"x3-1/2"
Qty/ctn (pcs)	10	10



Flat Bend

To connect one horizontal and vertical duct.

Code	9804-115-08	9802-115-08	9803-115-08
Model	FBE70	FBE90	FBE125
Dimension (mm)	70x55	90x65	125x75
Dimension (inch.)	2-3/4"x2-1/8"	3-1/2"x2-9/16"	4-15/16"x2-15/16"
Qty/ctn (pcs)	10	10	10



Upper Connector with Seal

Connects two ducts.

Code	9804-103-08
Model	CSE70
Dimension (mm)	70x55
Dimension (inch.)	2-3/4"x2-1/8"
Qty/ctn (pcs)	20



Flexible Sleeve

Makes installations much easier.

Code	9804-118-08	9802-118-08
Model	FLES90	FLES70
Dimension (mm)	90x65	70x55
Dimension (inch.)	3-1/2"x2-9/16"	2-3/4"x2-1/8"
Qty/ctn (pcs)	6	6



Internal Elbow

To connect two ducts at right internal angles.

Code	9804-112-08	9802-112-08	9803-112-08
Model	CBE70	CBE90	CBE125
Dimension (mm)	70x55	90x65	125x75
Dimension (inch.)	2-3/4"x2-1/8"	3-1/2"x2-9/16"	4-15/16"x2-15/16"
Qty/ctn (pcs)	10	10	10



Wall Duct

To cover the through wall holes.

Code	9804-111-08	9802-111-08	9803-111-08
Model	WDE70	WDE90	WDE125
Dimension (mm)	70x55	90x65	125x75
Dimension (inch.)	2-3/4"x2-1/8"	3-1/2"x2-9/16"	4-15/16"x2-15/16"
Qty/ctn (pcs)	10	10	10



T-Joint

A three way connector for pipes/cables.

Code	9802-200-08	9803-200-08	To be used together with
Model	TJE90	TJE125	OTP joint-reduction.
Dimension (mm)	90x65	125x75	
Dimension (inch.)	3-1/2"x2-9/16"	4-15/16"x2-15/16"	
Qty/ctn (pcs)	8	8	

TRY IT, LOVE IT



MADE IN USA



Ph: 803.909.8100 | Fx: 803.909.8725 | E: info@pdmus.com | www.pdmus.com